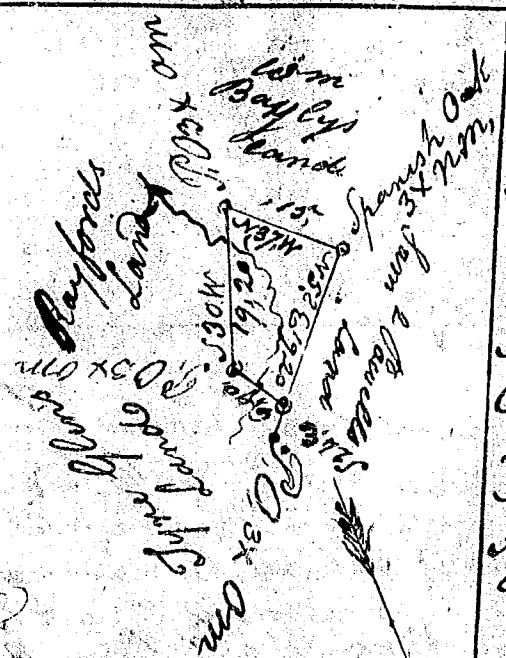


South Carolina Pursuant to a warrant from John  
 Laurens County Thomas Esq. Com. of Locations No.  
 Saluda River dated the 12<sup>th</sup> day of Dec. 1791  
 I have admeasured & laid out unto Clayborne Sims  
 a Tract of fifty One Acres of Land Situated in the  
 said district on Peedy River Bounding S. on Ab.<sup>m</sup>  
~~neighbors~~ Box W. on Sam. & neighbors - E. on Daniel  
 Huger - & hath such shape form & marks as the  
 above plat Represents. Surveyed the 16<sup>th</sup> Jan. 1792  
 John Rodgers D.S.



State of S. Carolina  
 Pursuant to a warrant from  
 John Thomas Esq. Com. of Location  
 No Saluda. Bearing Date the  
 19<sup>th</sup> of July 1791, I have  
 admeasured & laid out unto  
 Claybourn Sims a Tract of  
 fifteen Acres of Land in Laurens  
 County waters of Little River,  
 Bounded by a line Running  
 N 53° E 19 Chains 20 Links on  
 Sam. Powells Land & hath such  
 other Courses Shape and Marks  
 as the above plat Represents  
 Certified the 26<sup>th</sup> of Nov. 1791  
 John Hunter D.S.

Laid down by a Scale of  
 20 Ch. to an Inch.